

# FORZA

# WINNEBAGO



## WHY FORZA?

Primera® cab seats and furniture

Powered patio awning with LED lighting

Available tankless water heater with recirculation pump

Smart Storage™

Available MCD solar/blackout roller shades

Residential refrigerator

Available exterior entertainment center with HDTV

Available washer and dryer

Polished Corian® galley countertops and mosaic backsplash



On the Cover: 38W Silver Pearl Full-Body Paint

38W Serene with Glazed Driftwood Cabinetry

## A Forza Fit For You

Families love the Forza™ for its flexible sleeping spaces, such as the available Project 2000 front overhead bunk, and its budget-friendly price tag. The new 38W features three sliderooms, two full bathrooms, and an entertainment wall with a large HDTV on an adjustable mount. The popular 34T and 36G return with an

incredible list of features that includes Primera® cab seats and furniture, Corian® galley countertops, and a residential refrigerator. Four fabric collections and three wood selections are sure to appeal to even the most discerning tastes. Move forward into the diesel lifestyle in your very own Winnebago® Forza.



2016 MotorHome  
READERS' CHOICE  
WINNER  
Class A



38W Serene with Glazed Driftwood Cabinetry

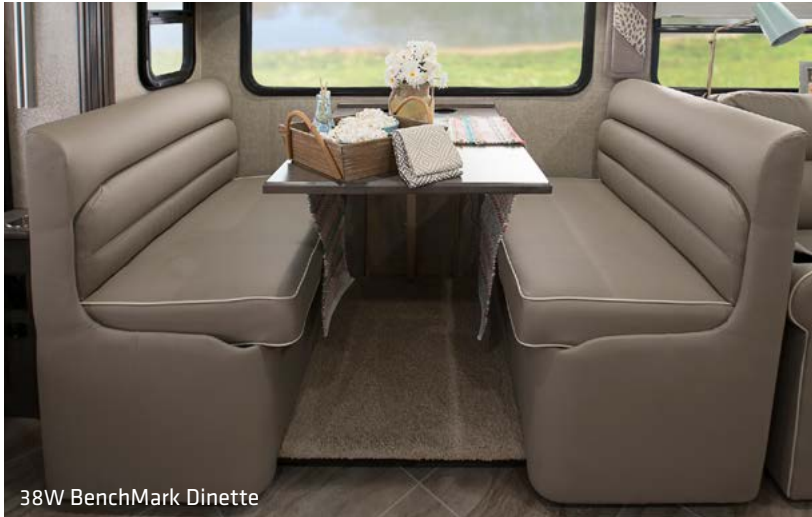
The Forza comes primed for your entertainment with an HDTV, DVD player, home theater soundbar, and available JBL® 5-speaker Premium Cab Sound System. The interior décor choices are carefully selected to put you in a great mood while an electric fireplace can be added for additional heat while enhancing the ambiance (standard 38W). If you love the idea of a big family gathering space, select the 34T with the available inLounge™ U-shaped sectional that functions as an extendable sectional sofa while the moveable inTable™ functions as a side table, coffee table, or a dining table for four. The 36G includes a recliner for study and relaxation. All models incorporate the Versa swivel cab seats into the conversation to expand your living space without lengthening the coach.



38W MCD Blackout Roller Shades



38W Cab Seat Reclined



38W BenchMark Dinette



38W BenchMark Dinette Storage



38W BenchMark Dinette as Bed



OnePlace System Center



38W Flexsteel Fold N Tumble Sofa



38W Flexsteel Fold N Tumble Sofa Extending



38W Flexsteel Fold N Tumble Sofa Extended



38W Electric Fireplace and HDTV



38W Flexsteel Fold N Tumble Sofa as Bed



38W Galley

A residential refrigerator/freezer with an icemaker and a microwave/convection oven that cooks and browns like a conventional oven highlight an extraordinary galley that has plenty of space, storage, and amenities for your home cooking. Stylish touches such as the decorative backsplash, Corian sink covers, and the hinged glass range cover complement the glazed cabinetry. Enjoy your meal in the comfortable, versatile BenchMark® dinette that comes standard in all models.



38W Full-Extension Drawers



38W Refrigerator/Freezer



Microwave/Convection Oven



38W Sink



38W Corian Sink Covers



38W Pantry



38W Power Port



38W Bedroom



38W Wardrobe



38W Bunk Bed Storage

The bedroom puts your body and mind at rest with a walk-around queen bed or available king bed in the 36G. Intelligent features like USB chargers are built into the nightstands and a generator switch is built into the bedroom overhead cabinet for those times you need to turn the A/C on or off in the middle of the night. Bunk beds in the 38W make family travel more enjoyable, but when you don't need the sleeping space, the top bunk can flip down so the bunk beds can be used as a wardrobe. The 38W also includes two full bathrooms, which means less time spent waiting for the shower and more time enjoying your travels.



38W Bunk Beds



38W Top Bunk Bed Stowed



38W Mid-Coach Shower



38W Master Shower with Skylight



38W Mid-Coach Bathroom



38W Available Dryer



38W Available Washer





Dash

Settle in for a comfortable ride in cab seats that feel custom-crafted just for you thanks to multiple adjustment points and six-way power pedestals. Upgrade to the +Lounge passenger seat for a footrest and flip-up workstation. Entertainment options such as the stereo, DVD player, available SiriusXM® radio, and even your Bluetooth™-connected phone are controlled through the dash touchscreen/rearview monitor. Above the cab you can add the available Project 2000 overhead bunk with a comfortable bed that your guests will love.



Cab Shades



Available +Lounge Passenger Seat

# FORZA Exterior



At the campsite, it's hard to say what's more compelling, the high-gloss full-body paint exterior, the powered patio awning, or the available exterior entertainment center with an HDTV. The abundant exterior storage is one of greatest advantages of choosing a diesel coach and the Forza makes it extra easy to access your gear with paddle-style latches and lighted compartments.



38W Powered Patio Awning with LED Lighting



Exterior Mirror with Defrost and Sideview Camera



38W Stylized Aluminum Wheel



LED Awning Lights



**Fiberglass Roof** The crowned, one-piece fiberglass roof is backed by a 10-year limited parts-and-labor roof skin warranty.

**Thermo-Panel® Sidewalls** By layering fiberglass and high-density block foam insulation with welded aluminum support structures, we create some of the industry's strongest, most durable and lightweight sidewalls.

**E-Coating** An electrodeposition coating helps protect critical steel components.

**Embedded Steel** Metal substructures embedded into the sidewall provide solid attachment points to keep cabinets and appliances mounted securely in place.

**Solid Framework** Structural extruded aluminum creates an extremely strong and solid structural framework.

**Laser-Cut Tubing** Precision laser cutters create precise joints in structural steel that are stronger and require less welding.



**Interlocking Joints** Specially engineered interlocking joints connect the floor, sidewalls and roof where competitors often rely on simple screws to bear the weight.

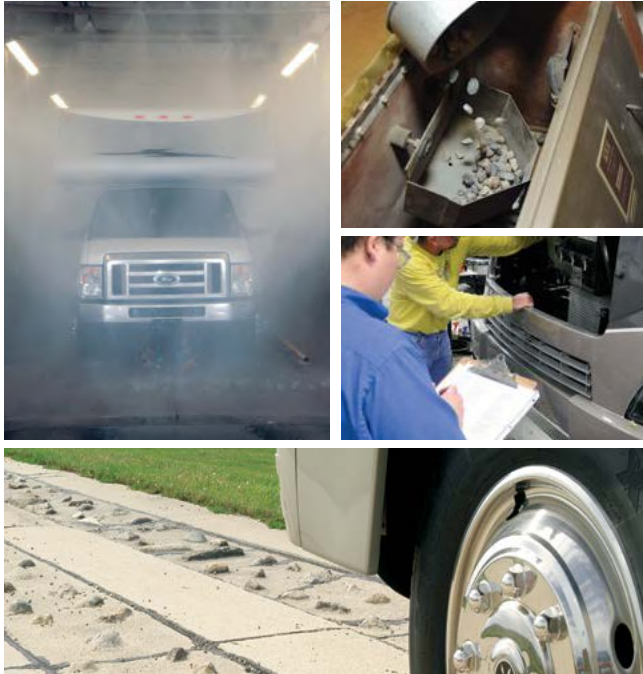


**SUPER  
STRUCTURE**

BUILT TO LAST

Every coach—from our smallest Class C to our largest diesel-pusher model—is built to Winnebago's® legendary SuperStructure® construction design. It's a process developed and refined over more than 50 years of building some of the strongest, most durable coaches in the industry.

**TESTING** Before rolling out of our factories, every coach undergoes an extensive 113-point inspection. Each coach also passes a high-pressure water test that simulates rain at a rate of 50-inches per hour to check for leaks. During the design process, our computer simulations, physical testing center, and rigorous test track ensure each model is built to last.



**DETAILS** At Winnebago, we treat the features you can't see with the same care as the ones you can. Look in the access panels of some of our competitors' coaches and you'll see loose insulation and wires haphazardly strewn about. Winnebago maintains a clean fit and finish throughout so your coach will last for the long haul.



**BUILT IN-HOUSE** We process and finish key aluminum parts. We rotocast our own plastic components. In fact, we manufacture most of our own parts so they are designed to fit the space, rather than fitting the space to an awkward off-the-shelf component size.



**SUPER  
STRUCTURE**  
BUILT TO LAST

**W** Visit [BetterBuiltRVs.com](http://BetterBuiltRVs.com) to gain real insight into what goes into a Winnebago motorhome.

**TAKE A TOUR** We're proud of our processes, state-of-the-art facilities, and the people who make Winnebago number one. We invite you to visit our complex in Forest City, Iowa, for a firsthand look at the dedication and technology behind every motorhome we build.

Call (641) 585-6936 or (800) 643-4892 or visit us online at [Winnebagolnd.com/company/visit](http://Winnebagolnd.com/company/visit) for more information.



Choose from four fabric collections and three wood finishes.

## Reflection



Primer



Feature Fabric



Bedspread



Corian Countertop  
(Galley)



Vinyl Flooring



Coffee-Glazed  
Honey Cherry



Coffee-Glazed  
Vienna Maple



Glazed Driftwood

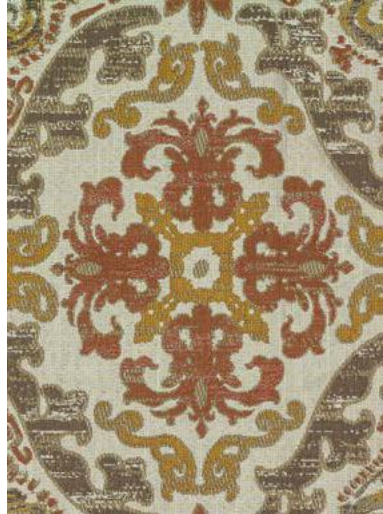
*Winnebago® reserves the right to change décor materials and specifications without notice or obligation.*

Choose from four fabric collections and three wood finishes.

## Autumn Ridge



Primera



Feature Fabric



Bedspread



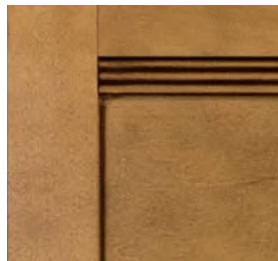
Corian Countertop  
(Galley)



Vinyl Flooring



Coffee-Glazed  
Honey Cherry



Coffee-Glazed  
Vienna Maple



Glazed Driftwood

*Winnebago® reserves the right to change décor materials and specifications without notice or obligation.*

Choose from four fabric collections and three wood finishes.

## Nantucket



Primer



Feature Fabric



Bedspread



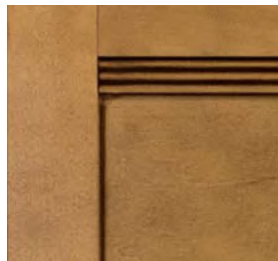
Corian Countertop  
(Galley)



Vinyl Flooring



Coffee-Glazed  
Honey Cherry



Coffee-Glazed  
Vienna Maple



Glazed Driftwood

Winnebago® reserves the right to change décor materials and specifications without notice or obligation.



Choose from four fabric collections and three wood finishes.

## Serene



Primera



Feature Fabric



Bedspread



Corian Countertop  
(Galley)



Vinyl Flooring



Coffee-Glazed  
Honey Cherry



Coffee-Glazed  
Vienna Maple



Glazed Driftwood

*Winnebago® reserves the right to change décor materials and specifications without notice or obligation.*

# FORZA Paint



Choose from six full-body paint options.



**Mahogany**  
FULL-BODY PAINT



**Pewter**  
FULL-BODY PAINT



**Red Maple**  
FULL-BODY PAINT

# FORZA Paint



Choose from six full-body paint options.



**Sandstone**  
FULL-BODY PAINT



**Silver Pearl**  
FULL-BODY PAINT

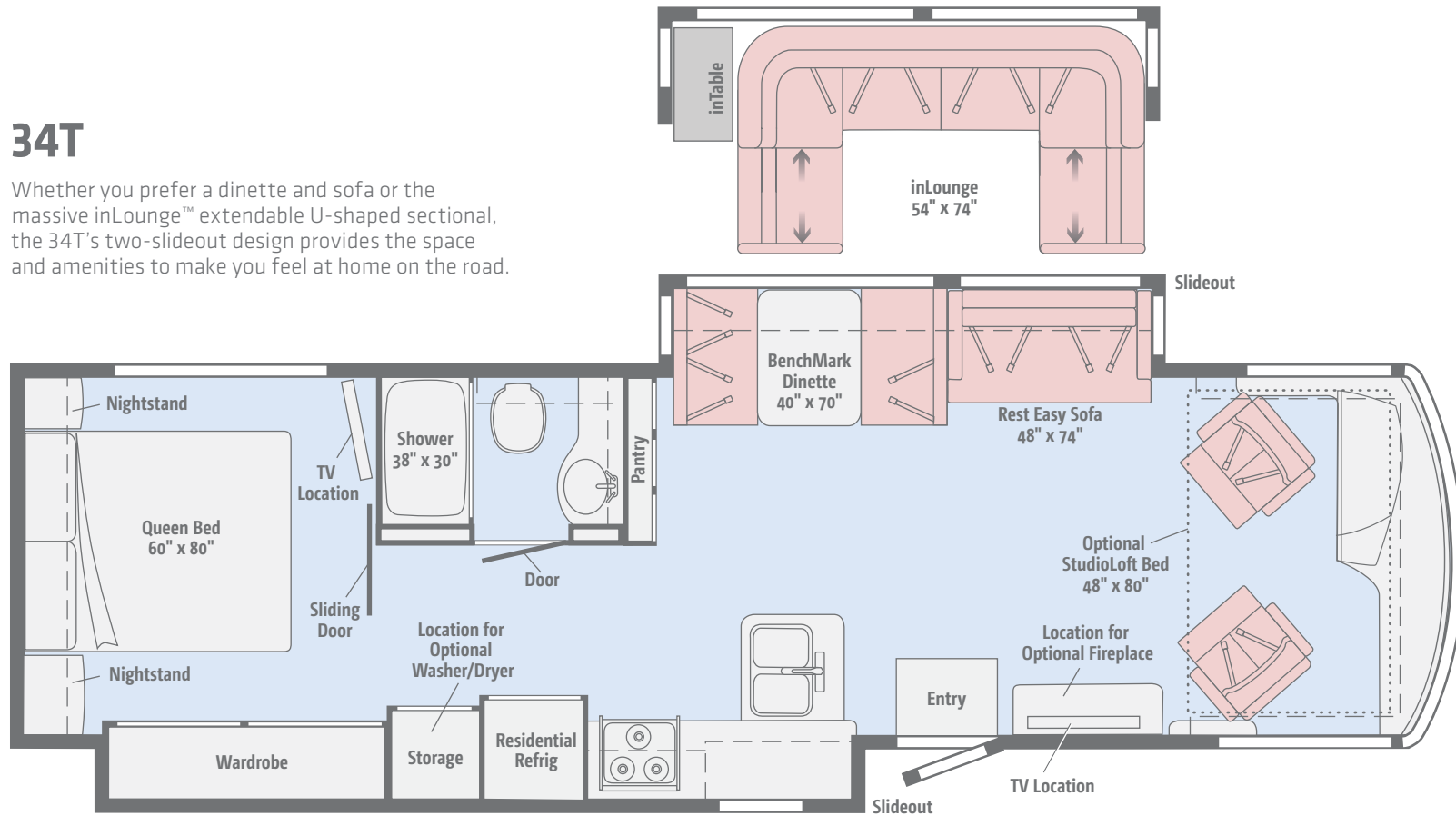


**Silver Sky**  
FULL-BODY PAINT

Click here to explore this floorplan's web page.

# 34T

Whether you prefer a dinette and sofa or the massive inLounge™ extendable U-shaped sectional, the 34T's two-slideout design provides the space and amenities to make you feel at home on the road.

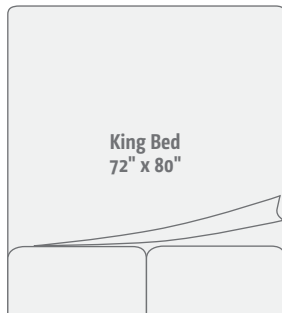
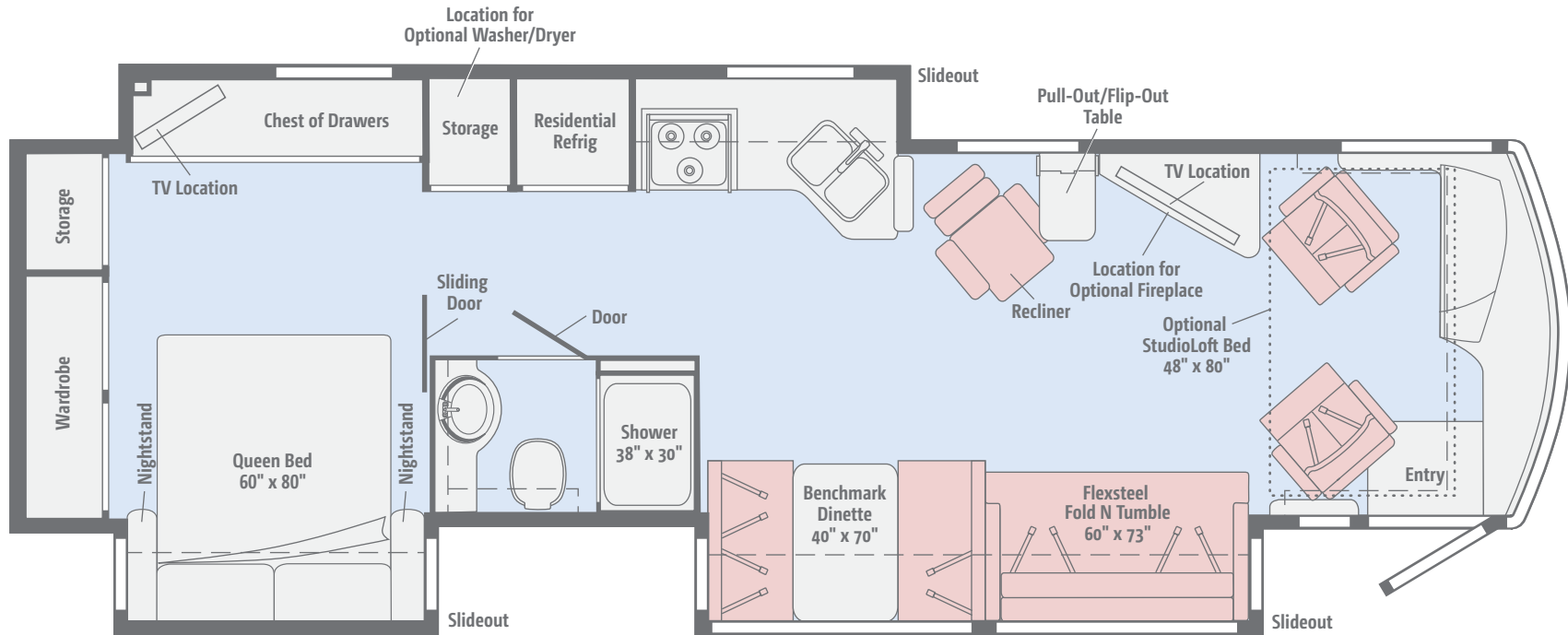


Dimensions shown are for sleeping space only and may vary due to styling differences. Dashed lines denote overhead storage areas. Floorplans and specifications are also available online at [WinnebagoInd.com](http://WinnebagoInd.com).

Click here to explore this floorplan's web page.

### 36G

Three slideouts provide ample space for a galley with a residential refrigerator and a lounge with sofa, recliner, entertainment center, and available electric fireplace.



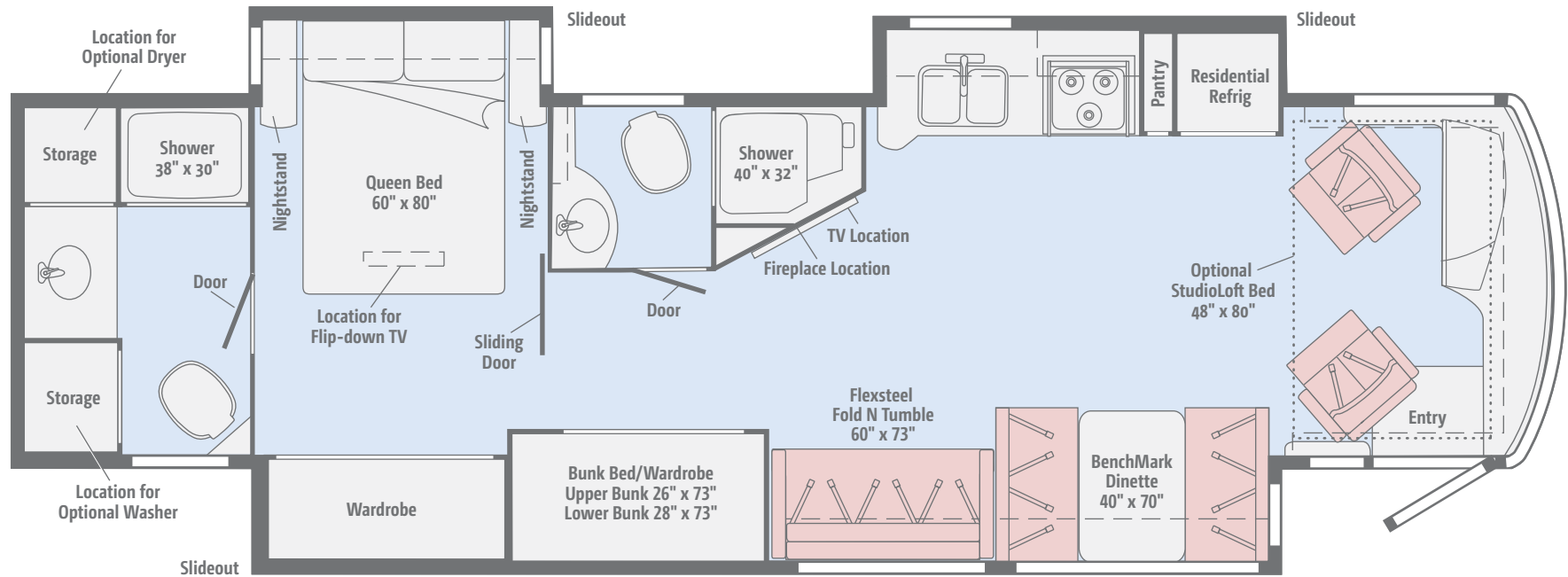
Primera Vinyl Tile

Dimensions shown are for sleeping space only and may vary due to styling differences. Dashed lines denote overhead storage areas. Floorplans and specifications are also available online at [WinnebagoInd.com](http://WinnebagoInd.com).

[Click here to explore this floorplan's web page.](#)

## 38W

An open floorplan for a galley and lounge, combined with bunk beds and two full baths make the 38W ideal for anyone traveling with a full house.



Dimensions shown are for sleeping space only and may vary due to styling differences. Dashed lines denote overhead storage areas. Floorplans and specifications are also available online at [WinnebagoInd.com](http://WinnebagoInd.com).

## WEIGHTS & MEASURES

	<b>34T</b>	<b>36G</b>	<b>38W</b>
Length	35'6"	37'10"	39'9"
Exterior Height <sup>1</sup>	11'11"	11'11"	11'11"
Exterior Width <sup>2</sup>	8'5.5"	8'5.5"	8'5.5"
Exterior Storage <sup>3</sup> (cu. ft.)	153	222	228
Awning Length	17'	11'6"	20'
Interior Height	6'8"	6'8"	6'8"
Interior Width	8'0.5"	8'0.5"	8'0.5"
Freshwater Tank Capacity <sup>4</sup> (gal.)	84	84	100
Water Heater Capacity (gal.)	10	10	10
Holding Tank Capacity - Black/Gray <sup>4</sup> (gal.)	48/54	48/44	49/48/51
LP Capacity <sup>5</sup> (gal.)	23	23	23
Fuel Capacity (gal.)	90	90	90
GCWR <sup>6</sup> (lbs.)	30,000	33,000	34,500
GVWR (lbs.)	26,000	27,910	29,410
GAWR - Front (lbs.)	10,410	10,410	10,410
GAWR - Rear (lbs.)	17,500	17,500	19,000
Wheelbase	208"	236"	260"

## Freightliner® XCS Chassis

- 26,000-lb. chassis, Allison® 6-speed automatic 2100 MH transmission (34T)
- 27,910-lb. chassis, Allison 6-speed automatic 2500 MH transmission (36G)
- 29,410-lb. chassis, Allison 6-speed automatic 2500 MH transmission (38W)
- 340-hp Cummins® ISB 6.7L
- Information display center
- NeWay® front air suspension
- V-Ride rear air suspension
- 160-amp. alternator
- Air brakes w/ABS
- Engine exhaust brake
- Automatic hydraulic leveling jacks
- 7-pin trailer wiring
- Trailer Hitch<sup>6</sup> 5,000-lb. drawbar/500-lb. maximum vertical tongue weight
- Stainless steel wheel liners (34T)
- Stylized aluminum wheels (36G, 38W)

## Cab Conveniences

- Cab seats adjustable armrests, fixed lumbar support, and multi-adjustable recline
- 6-way power driver & passenger seats
- 3-point seat belts
- Radio/Rearview Monitor System DVD receiver with 6.2" LCD color touch screen, handheld remote, iPod®/MP3 input, rear color camera, Bluetooth®, SiriusXM® (includes 90-day trial subscription), Spotify®, AppRadio One
- Cruise control
- 12-volt powerpoints
- Powered MCD blackout roller visor/shade (front windshield)
- MCD blackout roller shade (driver and passenger windows)
- Chassis/house battery radio power switch
- Power mirrors w/defrost and sideview camera
- Power steering
- Powered stepwell cover (NA 34T)
- TRW® tilt/telescopic steering column w/foot-actuated pedal

## OPTIONAL EQUIPMENT

- +Lounger passenger cab seat w/footrest and flip-up workstation
- SiriusXM® (includes 90-day trial subscription), iPod® interface connector, receiver, remote
- JBL premium audio tuned 360-watt amplifier w/5 speakers including subwoofer

## Interior

- 48" HDTV
- Satellite system ready
- Digital TV amplified antenna system
- Electric fireplace (38W)
- Home theater sound bar system
- Blu-ray™ disc player
- LED ceiling lights
- MCD blackout roller shades
- Soft vinyl ceiling
- OnePlace® systems center
- Tinted, dual-glazed coach windows
- Powered ventilator fan (galley)
- Washer and dryer prep
- Assist bar
- Vinyl flooring throughout
- USB chargers (cab, lounge, bedroom)

## OPTIONAL EQUIPMENT

- Washer and dryer (located in the rear of master bath)
- Electric fireplace (34T, 36G)
- Powered StudioLoft™ w/privacy curtain, ladder, cargo net
- Automatic HDTV satellite antenna
- MCD solar roller shades

## Galley

- Corian® countertops and decorative backsplash
- 2-door residential refrigerator/freezer w/icemaker
- Microwave/convection oven w/range fan and touch control
- 3-burner range top w/storage below
- Corian sink covers
- Glass bi-fold range cover
- Pantry (34T, 38W)

## Bath

- Laminate countertop
- Flexible showerhead
- Textured glass shower door
- Skylight
- Porcelain toilet w/foot pedal and sprayer (electric flush in rear bath, 38W)
- One-piece fiberglass shower surround
- Bamboo sink cover (38W)
- Powered roof vent(s)
- Medicine cabinet
- Tissue holder
- Towel bar(s)
- Towel ring(s)

## Bedroom

- 28" HDTV (38W)
- 32" HDTV (34T)
- 40" HDTV (36G)
- Queen bed w/innerspring mattress
- Bunk beds (38W)
- Bedsread and pillow shams
- Headboard
- Room divider curtain (38W)

## OPTIONAL EQUIPMENT

- Queen InnoMax® Nouveau™ Freedom Air mattress (w/storage below)
- King InnoMax Nouveau Freedom Air mattress (36G)

## Exterior

- Powered patio awning** w/LED lighting
- 2nd powered patio awning** w/LED lighting (34T)
- Exterior compartment 110-volt duplex, TV antenna and 3-way A/V receptacles**
- KeyOne® lock system**
- Porch light** w/Interior switch (36G, 38W)
- Powered entrance awning** (36G, 38W)
- Lighted storage compartments**
- Automatic entrance steps**
- Lower front protective mask**
- Premium high-gloss sidewall skin**

### OPTIONAL EQUIPMENT

- Exterior entertainment center** w/32" HDTV

## Heating & Cooling System

- 2-13,500 BTU air conditioners** (1 A/C, 1 A/C w/heat pump) (34T)
- 2-15,000 BTU air conditioners** (1 A/C, 1 A/C w/heat pump) (36G, 38W)
- 35,000 BTU ducted furnace** (34T)
- 40,000 BTU ducted furnace** (36G)
- 2-20,000 BTU ducted furnace** (38W)

## Electrical System

- Service Center** cable TV input, 50-amp power cord, shoreline/generator automatic changeover switch, portable satellite hookup
- 2,000-watt inverter/charger w/remote panel with coach battery disconnect switch**
- 6,000-watt Cummins Onan® generator**
- Auxiliary start circuit**
- AC/DC electrical distribution system**
- 4 deep-cycle Group 31 Marine/RV batteries**
- Battery disconnect system** (coach and chassis)
- PowerLine® Energy Management System**
- Automatic dual-battery charge control**
- Automatic generator start system**

## Plumbing System

- Service Center** pressurized city water hookup w/diverter fill, freshwater drain, drainage valves, exterior wash station w/pump switch, holding tank flushing system, 20' sewer hose
- On-demand water pump**
- 10-gallon LP 110-volt electric water heater w/electric ignition**
- TrueLevel™ holding tank monitoring system**
- Full-coach water filtration system**
- Permanent-mount LP tank w/gauge**
- Heated holding tank compartment**
- Water system winterization package**

### OPTIONAL EQUIPMENT

- Tankless water heater** w/recirculation pump

## Safety

- LP, smoke, and carbon monoxide detectors**
- 10 BC fire extinguisher**
- Ground fault interrupter**
- High-mount brake lamps**
- Daytime running lamps**
- Child seat tether anchor**

## Warranty<sup>7</sup>

- 12-month/15,000-mile basic limited warranty<sup>8</sup>**
- 36-month/36,000-mile limited warranty on structure<sup>8</sup>**
- 10-year limited parts-and-labor warranty on roof skin<sup>8</sup>**

### FOOTNOTES

1. The height of each model is measured to the top of the tallest standard feature and is based on the curb weight of a typically equipped unit. The actual height of your vehicle may vary by several inches depending on chassis or equipment variations. Please check with your dealer for further information.
2. Floorplans feature a wide-body design - over 96". In making your purchase decision, you should be aware that some states restrict access on some or all state roads to 96" in body width. Before making your purchase decision, you should confirm the road usage laws in the states of interest to you.
3. The load capacity of your motorhome is designated by weight, not by volume, so you cannot necessarily use all available space when loading your motorhome.
4. Capacities are based on measurements prior to tank installation. Slight capacity variations can result due to installation applications.
5. Capacities shown are tank manufacturer's listed water capacity (W.C.). Actual filled LP capacity is 80% of listing due to overfilling prevention device on tank.
6. Actual towing capacity is dependent on your particular loading and towing circumstances which includes the GVWR, GAWR, and GCWR as well as adequate trailer brakes. Please refer to the Operator's Manual of your vehicle for further towing information.
7. See separate chassis warranty.
8. See your dealer for complete warranty information.

NA Not Available

Not all items available in combination. See dealer for details.

Winnebago's® continuing program of product improvement makes specifications, equipment, model availability, and prices subject to change without notice. Published content reflects the most current product information at time of printing. Please consult your dealer for individual vehicle features and specifications.







Let us host  
your next

# Adventure



[WGOAdventures.com](http://WGOAdventures.com)



**WINNEBAGO**<sup>TM</sup>  
RV INSURANCE



From RV to personal insurance, Winnebago RV Insurance can provide all the coverage and services you need to feel at home on the road.

**For more information:**  
**(800) 642-4892**

Connect with Winnebago (Click one of the following)



Like us



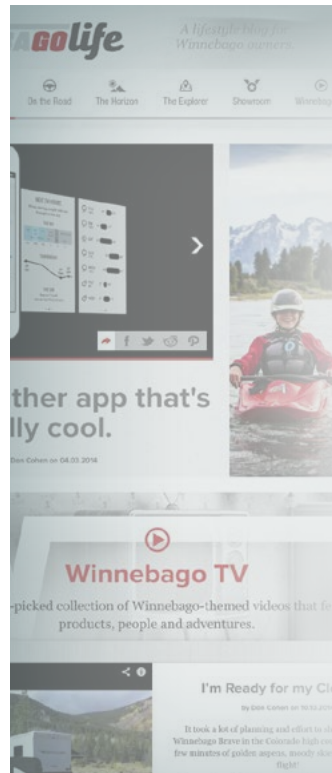
Follow us



Watch us

## WinnebagoInd.com Has All The Answers

Visit [WinnebagoInd.com](http://WinnebagoInd.com) on your computer, smartphone, or tablet for the latest product information and updates.



## Welcome to GoLife!

Visit our lifestyle blog for motorhome news, personal travelogues, and community stories.

[WinnebagoLife.com](http://WinnebagoLife.com)

**GoLife**

# **PREFERRED CARE PROGRAM**

We back our motorhomes with best-in-class support both before and after the sale:

- 12-month/15,000-mile basic limited warranty
- 36-month/36,000-mile limited warranty on structure
- 10-year limited parts-and-labor warranty on fiberglass roof
- Complimentary 24-hour roadside assistance program
- TripSaver® Fast Track Parts guarantees that in-stock warranty parts ship directly to your dealer within 24 hours
- National dealer service network



For more information:  
[WGOService.com](http://WGOService.com)



## **WIT CLUB**

### Join the Club, Join the Fun

Here's the perfect way to begin your life on the road as the owner of a new Winnebago – by joining the exclusive WIT Club. Start your adventure with other fun-loving WIT Club members from across the country and get the most out of your new Winnebago motorhome.



#### Members enjoy:

- Caravans and rallies
- Newsletters
- Local and state group activities
- RV travel benefits

See more at  
[WITClub.com](http://WITClub.com)



### Grand National Rally

Each year, thousands of Winnebago owners descend upon Forest City, Iowa. Rally-goers enjoy an unforgettable week reconnecting with friends, taking tours, participating in activities, and more. Join the adventure next July!

# **WINNEBAGO**<sup>IND</sup>

## CONTACT US

### GENERAL INQUIRIES

Corporate Switchboard  
(641) 585-3535

### CURRENT PRODUCT OWNER AND SERVICE-RELATED INQUIRIES

(800) 537-1885  
or [winnebagoind.com](mailto:winnebagoind.com)

### NEW VEHICLE SALES INQUIRIES

[sales@winnebagoind.com](mailto:sales@winnebagoind.com)

### FAX

(641) 585-6966

### POSTAL ADDRESS

Winnebago Industries, Inc.  
P.O. Box 152  
Forest City, IA 50436

### STREET ADDRESS

Winnebago Industries, Inc.  
605 West Crystal Lake Road  
Forest City, IA 50436

# **LA MESA** **RV** **CLUB**

[LaMesaRV.com](http://LaMesaRV.com)  
800-496-8778